

NEWSLETTER

#3

MARCH 2024



Te Pūkeko Whakawātea

On Friday the 22nd of March we blessed our new whare located across the road from the HWC on 154 Highbury Ave, this is our fifth site in the organisation. The whare was blessed by Papa Manu Kawana and Parekaia Tapiata and attended by all of the org that was working that day and board members, afterwards we gathered with the Te Hiringa rangatahi for a hākari to whakanoa.

The SpYCWS team will be located in this whare and where they will be operating their community youth work and supported bail youth mentoring services. Te Hiringa have also taken on the massive role of maintaining the gardens and māra kai on the property and have been doing an awesome job so far by being able to use the kai they've grown and incorporate it into their cooking days.



"Itiiti rearea, teitei kahikatea ka taea "
"Although small you can ascend great heights"



... Te Pūkeko Whakawātea

The name 'Te Pūkeko' was chosen due to the area (Te Kawau) once being a swamp land and inhabiting pūkeko.

Te Pūkeko, came about as a reference to a Manu that resides in the swampy areas, also known for their 'comfort' in standing strong within te paruparu. The paruparu can also be an analogy / kīwaha for our hāpori and rangatahi we serve 'the dark, dense soils' that under the right conditions / nurture; this can support a kākano to sprout and grow strong...

the paruparu also can be used to hide taonga, until the right conditions appear to bring them to te Ao Marama and also the Pūkeko is renowned to searching for gems, kai, taonga from the paruparu.

Te paruparu can also be used as an analogy of our hāpori the mixing of people, create a diverse and rich base to grow kākano to their full potential. The Pūkeko was also the manu that was a Mōkai of Tāwhaki and assisted that ariki within his ascent to the realm of atua.



"Itiiti rearea, teitei kahikatea ka taea "
 "Although small you can ascend great heights"

Kaimahi Profile: AMELIA BURR



Tēnā koutou kātoa,
Ko Netherlands te whenua tipu
Ko Klimduin tōku maunga
Ko Rijn tōku awa
Ko Anna rāua ko Jochen ōku mātua
Ko Grace tōku teina
Ko Buur tōku ingoa whānau
Ko Amelia tōku ingoa

I had the privilege of being a social work student on placement at HWC last year and feel so lucky to now have a youth work role within the SpYCWS Team. I will finish my social work studies at Massey University this year, and I am passionate about continuing to support tamariki, rangatahi, and their whānau within community settings.

Favourite game to play?

Spotlight

Favourite ice cream flavour?

Duck Island salted caramel

Favourite movie/TV Series?

The Office US

What is the best piece of advice you have received?

Some advice I received to show the significance of active listening is that we only share what we know when we talk. However, we can learn twice as much when we listen to others. I like this piece of learning because it emphasises that listening to others supports us in gaining insights from someone else's knowledge and experiences, and we are continually learning, too.

What is your proudest achievement?

My proudest achievement is the friends I have made and the community I have built around me regarding my family, friends, work and voluntary commitments. I feel really blessed and privileged that the people in my life are committed to helping others, and this supports me in continually challenging my current values and worldviews to continue learning and support self-growth and development in all aspects of my life.

Where is your favourite place to relax and unwind?

My Pa Whakawairua, where I feel calm by connecting with my surroundings, is Makara Beach in Wellington. I often go for a walk and sit at the top of the maunga where I can see the South Island. It is a really beautiful view up there. 😊



"Itiiti rearea, teitei kahikatea ka taea "
"Although small you can ascend great heights"

Te Whanganui-A-Tara Hikoi

Transitions Service

The HWC Transitions team have put our heads together to think of ways that we can share different and new experiences with people they trust and feel safe with. As a team our goal is to help those we work with, to become more confident in travelling, experiencing new environments, building confidence and encouraging them to plan and feel comfortable taking trips independently in the future.

“Ma te korero ka mohio.

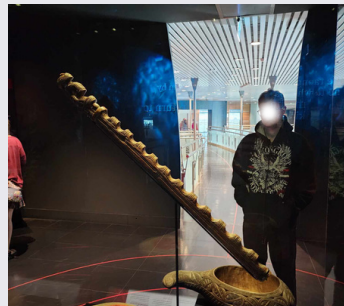
Ma te mohio ka matau.

Ma te matau ka marama. Ma te marama ka ora” “Through communication comes understanding.

Through understanding comes learning.

Through learning comes enlightenment.

From the trip we learnt a lot about our rangatahi. E.g we learnt that one of our neurodiverse clients was a really great rapper, when exposed to knowledge... some of the clients were that intrigued that they hadn't even finished the first floor by lunch time, some clients had never considered that they may be able to travel outside of Palmerston North with no car (We had meaningful conversations around catching buses/trains and where the local train station was in Wellington), some clients were a little out of their comfort zone when it came to interacting as a group and some clients really just enjoyed the social opportunity to spend time with peers their own age (For example we have a client who sits at the Oranga Tamariki office most days isolated). The trip gave them a sense of freedom and instilled an urge to want to travel and see more for themselves.



"Itiiti rearea, teitei kahikatea ka taea "
"Although small you can ascend great heights"

UPCOMING KAUPAPA

#3

MARCH 2024

- **Whakatau for new Kaimahi:**

Monday 08/04/24 8:30am @ HWC

- **School Holidays:**

Saturday 13/04/24 - Sunday 28/04/24

- **Pink Shirt Day:**

Friday 17/05/24

- **Youth Week:**

Monday 20/05/24 - Friday 24/05/24



HWC HOLIDAY PROGRAMME

REGISTER NOW
SPACE IS LIMITED

MONDAY 15TH - FRIDAY 19TH APRIL

• Tamariki aged 8-13 must be registered to attend
• Tamariki can be dropped off no earlier than 8:45am
• Tamariki must be picked up by 3:30pm
• HALF payment required on booking
• FULL payment required by 12th April 2024

MONDAY \$10
COOKING | IN HOUSE GAMES

TUESDAY \$15
CLOUD 9 | ESPLANADE

WEDNESDAY \$10
MINI GOLF | MAKINO POOLS

THURSDAY \$10
WAKAS ADVENTURES

FRIDAY \$10
IN HOUSE MOVIES

REGISTER BY CONTACTING SANDRA: 06 3580504 | sandra@hwc.org.nz

HIGHBURY WHĀNAU CENTRE
155 Highbury Avenue,
Palmerston North 4412



H-DUB CLUB

ARTS
MULTI SPORT
COOKING GAMES

EVERY WEDNESDAY FROM 13TH OF MARCH TO END OF TERM 1. FREE

3.15PM - 4.30PM @ HWC

AGES 11 & 12

For more info or to register contact
06 3580504



"Itiiti rearea, teitei kahikatea ka taea "
"Although small you can ascend great heights"